



# *Billingsgate Seafood Training School*

## Directions and Parking

Office 30  
Billingsgate Market  
Trafalgar Way  
London  
E14 5ST

020 7517 3548  
[www.seafoodtraining.org](http://www.seafoodtraining.org)

Charity Registration No. 1069809

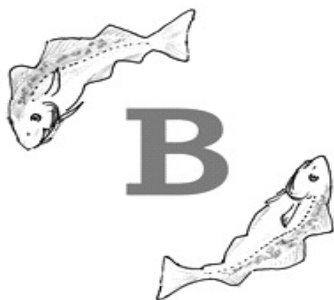
Company Registration No. 3567811





## Parking

Free parking is available for customers of the training school within the market.  
**Please display this permit in your car windscreen.**



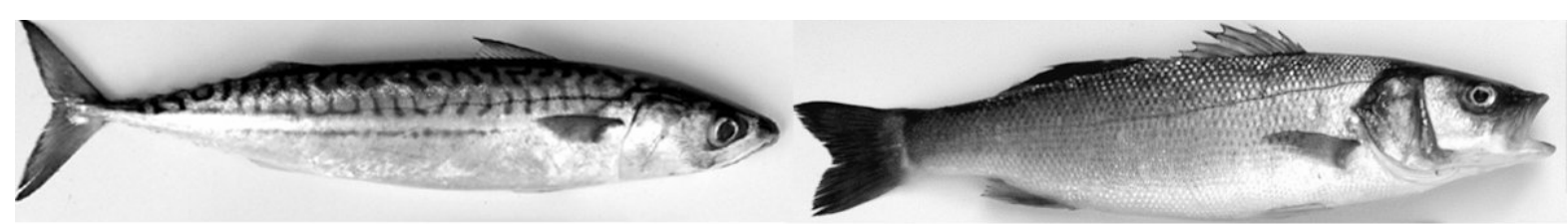
## PARKING PERMIT

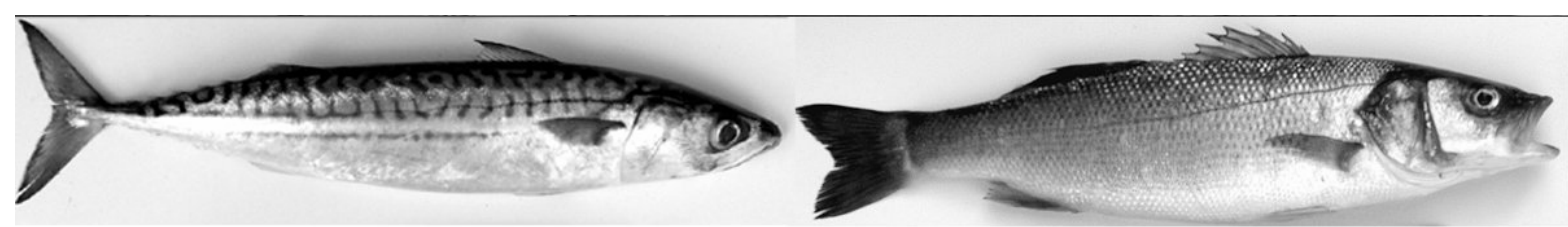
**Attending Course at Billingsgate Seafood Training School**

**Name:**.....

**Name of Course:**.....

**Date of Course:**.....

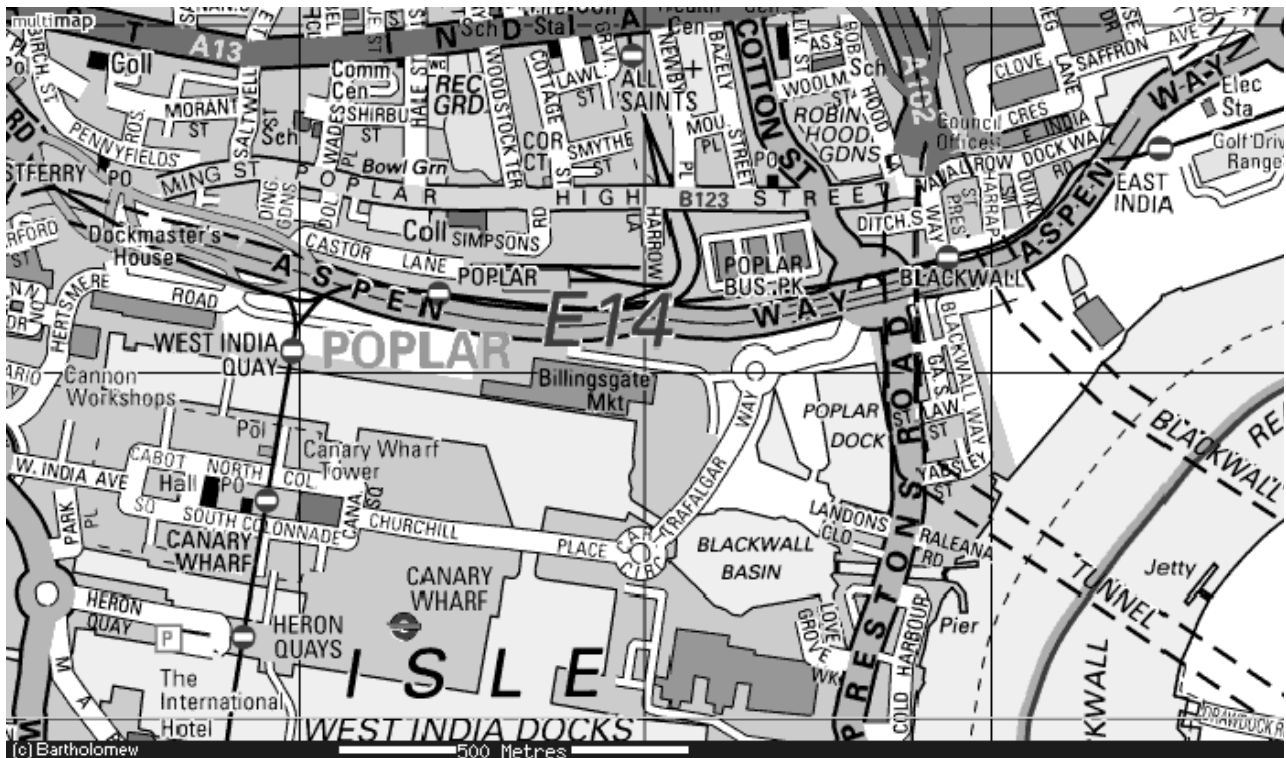




**When visiting the market, please ensure that you do not wear open shoes or sandals. These are not permitted on the market floor.**

## Directions

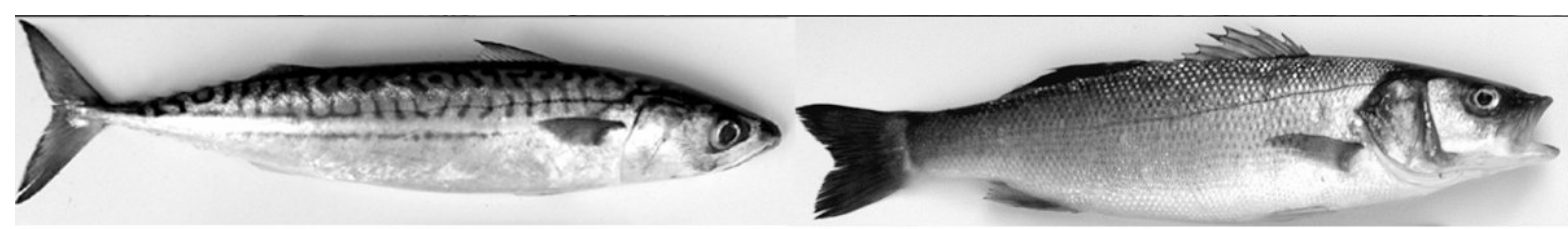
**1st Floor Billingsgate Market, Trafalgar Way, London E14 5ST, Tel: 020 7517 3548**



### Driving To Billingsgate

From the City take the A1100 Tower Hill - A1203 East Smithfield - The Highway - Limehouse Link Tunnel (follow signs to Royal Docks). On exit from the tunnel into Aspen Way (A1261), take the first slip road, and follow signs to Billingsgate Market. Plenty of free parking is available.





### **From M1, A1, M11:**

Follow M1, A1 or M11 past M25 until you hit the North Circular A406. Head clockwise (east) on the A406 all the way around until you meet the A13. Turn right and join A13 heading West sign posted City.

You will see the towers of Canary Wharf in front of you. Billingsgate Fish Market is just in front of Canary Wharf. After the Canning Town Flyover on the A13 bear left down a short tunnel sign posted 'Isle of Dogs'. On exiting the tunnel take the left lane to traffic lights on a roundabout. Take 2nd exit (you will see a MacDonaldis restaurant in front of you), sign posted Billingsgate Market. The market entrance is the second exit from the next roundabout.

### **Directions - DLR**

The nearest station to Billingsgate is Blackwall, on the Docklands Light Railway (DLR) - DLR trains bound for Beckton leave Tower Hill every few minutes and are direct. The journey from Tower Hill takes 12 minutes - you will see Billingsgate Market to your right well before the train reaches Blackwall.

Once at Blackwall, Billingsgate Market is clearly signposted (descend to ground level, walk straight ahead, then veer to the left under an underpass - this will finally pop out opposite Billingsgate McDonalds, which is right next to the market gate).

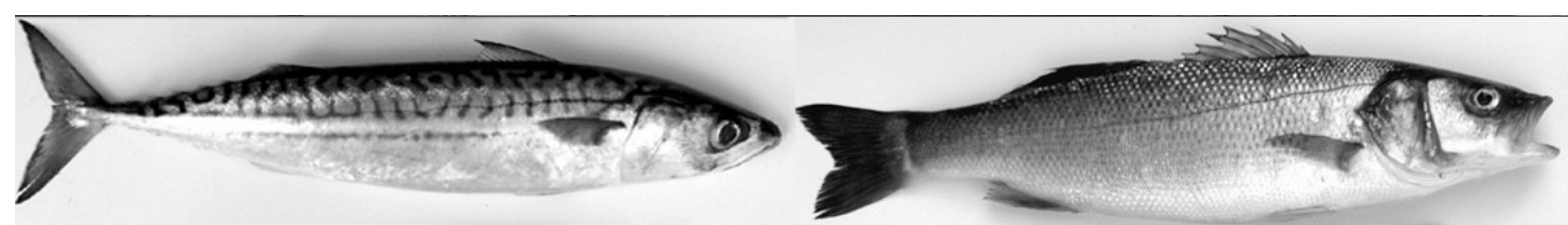
### **Directions - Jubilee Line**

The market is also accessible from Canary Wharf Station (DLR and Jubilee Line, with an excellent & fast link from Waterloo on the Jubilee Line) - from the Jubilee Line, take the Upper Bank Street exit, turn left, and then right onto South Colonnade towards Churchill place. Follow the road around with the Barclays Tower and Billingsgate Market (big yellow roof) on your left. Turn left into Trafalgar Way at Cartier Circle. It is about a 10 minute walk to the Gatehouse (the only entrance to Billingsgate Market is in Trafalgar Way).

### **Once you are at Billingsgate**

Walk through the market gate and head towards the market building - you will see steps ahead and to your left that you will have to go up to be level with the building. You should then see a big open door, ahead and to your left, which leads into the market floor. To the right of this big door is a small yellow door - enter this and go up the staircase to the first floor where all the offices are. Walk straight ahead along the corridor (keeping the windows to your right), and we will meet in office 28.





## **Cancellation Policy**

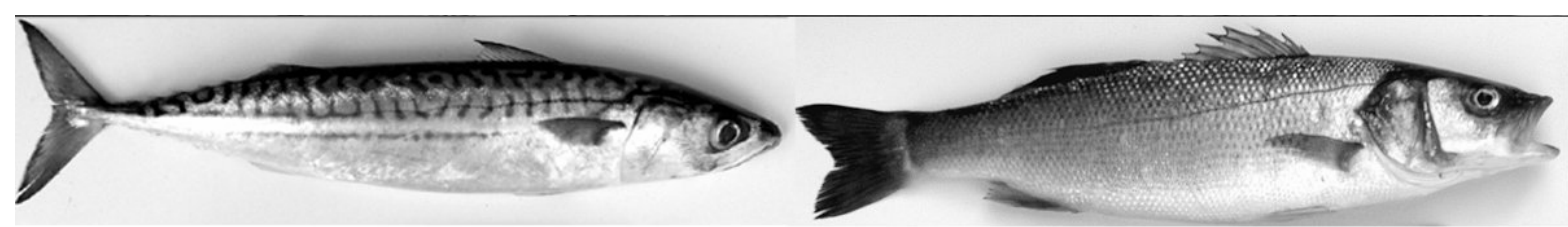
We are very happy to help make changes to a booking. But whilst we do appreciate that visitors need to cancel or change bookings from time to time we have a cancellation policy in operation as so many of our courses are fully booked.

### **CHANGING OR CANCELLING A BOOKING**

If you want or need to change or cancel a course booking see the schedule below:

<b>3 weeks prior to course:</b>	<b>Change/Cancel</b>	<b>No Charge Incurred</b>
<b>2 weeks prior to course:</b>	<b>Change</b>	<b>Admin Fee of 10%</b>
	<b>Cancel</b>	<b>25% of course fee</b>
<b>1 week prior to course:</b>	<b>Change</b>	<b>Admin fee of 20%</b>
	<b>Cancel</b>	<b>50% of course fee</b>
<b>Less than 1 week Prior to course:</b>	<b>No Refund</b>	





## Accomodation

Local to Billingsgate Market

### **Hotel Ibis (2minutes walk from market)**

1 Baffin Way, Isle of Dogs, London E14 9PE

Tel: 020 7517 1100 Fax: 020 7987

2\* - 87 Rooms

*DLR – Blackwall Stn*

### **Travelodge (20 minutes walk – 1 stop on DLR or 277 bus)**

Coriander Avenue, East India Dock Road (off A13), London E14 2AA

(aim for Saffron Avenue – LB Tower Hamlets Mulberry House – barrier – 2 turnings away)

Tel: 0800 850 950 Direct: 020 7531 9705

3\* - 232 Rooms

*DLR – East India Stn*

### **Crowne Plaza London Docklands (Complimentary shuttle bus to Canary Wharf)**

Western Gateway, Royal Victoria Dock, London, E16 1AL

Tel: 020 7055 2101

*quote Billingsgate Seafood Training School for preferential rate of £125 room only*

### **(Express) Holiday Inn – Royal Docks**

1 Silvertown Way, Silvertown E16 1EA

Tel: 020 7540 4040 Fax: 020 7540 4050

*Mainland & DLR – Canning Town Station*

### **Travel Inn – Beckton**

1 Woolwich Manor Way, Beckton, London E6 4NT

Tel: 020 7511 3853

*London City Airport*

*DLR – Beckton Stn*

### **Windsor House Brewers Fayre, Travel Inn**

The Windsor House, Woolwich Manor Way, Beckton, London E6 4NT

Tel: 020 7511 3853 Fax: 020 7511 4214

40 Rooms

*London City Airport*

*DLR – Beckton Stn*

### **The Tower Thistle Hotel:**

St Katherines Way, London E1 9LD

Tel: 020 7481 2575 Fax: 020 7488 4106

4\* - 800 Rooms, 12 Suites, 7 Apartments

*District, Circle, DLR – Tower/Tower Gateway*

### **London Bridge Hotel**

8-18 London Bridge Street, London SE1 9SG





Tel: 020 7855 2200      Fax: 020 7855 2233  
4\* - 119 Rooms                      *Mainline & Tube – London Bridge Stns*

**City Hotel**  
12 Osborne Street, London E1 6TE  
Tel: 020 7247 3313      Fax: 020 7375 2949  
0\* - 47 Rooms                      *District Line – Aldgate East Stn*

**Bardon Lodge**  
15-17 Stratheden Road, Blackheath, London SE3 7TH  
Tel: 020 8853 4051      Fax: 020 8858 7387  
3\* - 32 Rooms                      *Mainline – Westcombe Park; DLR – Greenwich Stn*

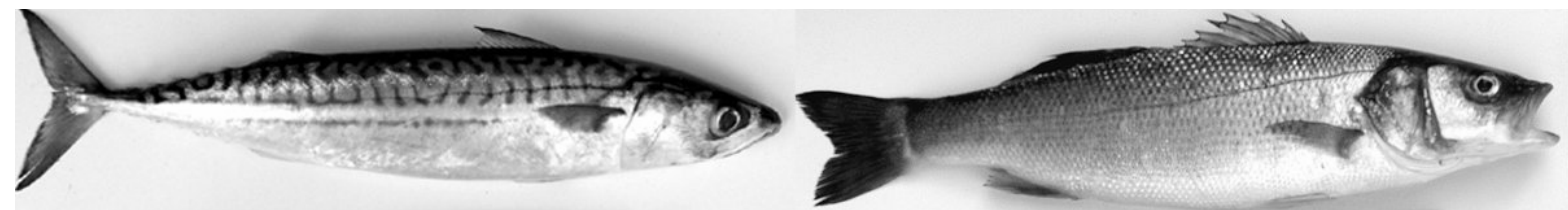
**Hotel Ibis**  
Greenwich High Road, Greenwich, London SE10 9JN  
Tel: 020 8305 1177      Fax: 020 8318 4378  
2\* - 82 Rooms                      *DLR – Cutty Sark; Mainline – Greenwich Stn*

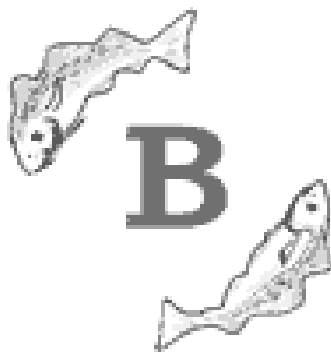
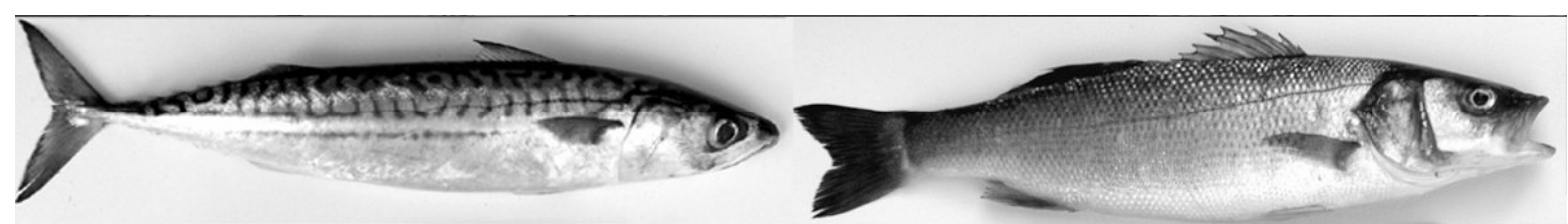
**(Express) Holiday Inn – Greenwich**  
Bugsby Way, Greenwich, London SE10 0GD (A102M)  
Tel: 020 8269 5000      Fax: 020 8269 5069  
*Mainline – Westcombe Park; Tube – North Greenwich*

**(Express) Holiday Inn – Stratford**  
196 High Street, London E15 2PD  
Tel: 020 7401 2525      Fax: 020 7401 3322  
*DLR – Pudding Mill Lane; Mainline – West Ham*

**Clarendon Hotel**  
8-16 Montpelier Row, Blackheath, London SE3 0RW  
Tel: 020 8318 4321      Fax: 020 8918 7378  
2\* - 250 Rooms                      *Mainline – Blackheath; DLR – Lewisham Stn*

**Billingsgate Seafood Training School**  
*Office 30, Billingsgate Market, Trafalgar Way, London E14 5ST*  
Tel: 020 7517 3548      Fax: 020 7517 3544  
*e-mail: info@seafoodtraining.org*





Office 30  
Billingsgate Market  
Trafalgar Way  
London  
E14 5ST

020 7517 3548  
[www.seafoodtraining.org](http://www.seafoodtraining.org)

Charity Registration No. 1069809

Company Registration No. 3567811

